

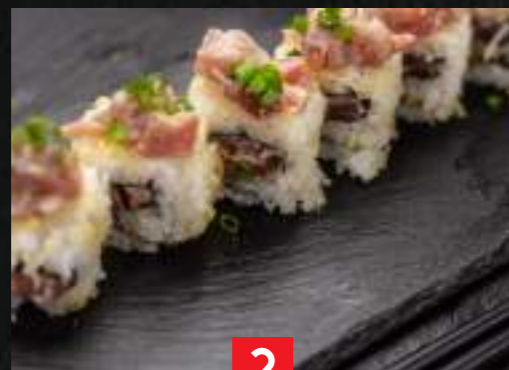


東京 食堂  
TOKYO  
SHOKUDO  
JAPANESE MADE AFFORDABLE

**SUSHI BAR**

# Rolls

- 1. Tuna Avocado Roll 1,700
- 2. Spicy Tuna Roll 1,680
- 3. Avocado Veg Roll 880
- 4. Crunchy Prawn Tempura Roll 1,380
- 5. Sesame Veg Roll 780
- 6. Caterpillar Roll 3,480
- 7. Teriyaki Chicken Roll 1,280
- 8. Spicy Salmon Roll 2,280



# Rice Bowls

Served with Miso Soup (only for dine-in)



Salmon  
2,750



Tuna  
1,980

Hokkaido  
Tuna | Salmon | Tamago |  
Cuttlefish | Prawn |  
Shiromi | Crab Stick



Tokyo  
Tuna | Salmon | Tamago |  
Crab Stick | Cucumber



Salmon  
Avocado  
1,980



Salmon Ikura  
Salmon | Ikura Gunkan  
3,980

\*Prices include taxes



東京 食堂  
TOKYO  
SHOKUDO  
JAPANESE MADE AFFORDABLE

**SUSHI BAR**



# Maki Sushi Rolls (6 pcs)

Kappa Maki (Cucumber)	440
Avocado Maki	480
Tekka Maki (Tuna)	980
Salmon Maki	1,200
California Roll (Crab)	780
Crab Stick Maki	680
Unagi Maki (Eel)	980
Assorted Maki	1,680



# Nigiri

**Zakuro** (6 Pcs)  
Tuna | Salmon | Tamago |  
Cuttlefish | Prawn | Shiromi  
**1,380**

**Sazanka** (8 Pcs)  
2 Tuna | 2 Salmon | Tamago |  
Cuttlefish | Prawn | Shiromi  
**1,780**

**Sazanami** (8 Pcs)  
Tuna | Salmon | Tamago |  
Cuttlefish | Prawn | Shiromi |  
Hotate | Ikura Gunkan  
**2,180**

**Yūnagi** (9 Pcs)  
Tuna | Salmon | Tamago |  
Cuttlefish | Prawn | Shiromi |  
Hotate | Ikura Gunkan | Unagi  
**2,580**

**Fuji** (12 Pcs)  
3 Tuna | 2 Salmon | Tamago |  
Cuttlefish | Prawn | Shiromi |  
Hotate | Ikura Gunkan | Unagi  
**3,200**

Salmon Nigiri (5 Pcs)	1,680
Tuna Nigiri (5 Pcs)	1,380
Salmon & Tuna Nigiri (8 Pcs)	2,280

## À la Carte (2 Pcs)

Ikura Gunkan	1,280	Tuna Nigiri	550
Unagi Nigiri	980	Salmon Nigiri	750
Tamago Nigiri	380	Cuttlefish Nigiri	420
Hotate Nigiri	880	Prawn Nigiri	550
Shiromi Nigiri	420		

**Sakura** (10 Pcs)  
2 Tuna | 2 Salmon | Tamago |  
Cuttlefish | Prawn | Shiromi |  
Hotate | Ikura Gunkan  
**2,580**

**Shiosai** (10 Pcs)  
2 Tuna | Salmon | Tamago |  
Cuttlefish | Prawn | Shiromi |  
Hotate | Ikura Gunkan | Unagi  
**2,780**

# Sashimi



**Sashimi 3  
Kinds  
(3 pcs each)  
1,980**

**Tuna (3 pcs) &  
Salmon (3 pcs)  
1,580**

**Tuna (6 pcs)  
1,180**

**Salmon (6 pcs)  
1,580**

\*Prices include taxes